

CASE STUDY - ROAD MAINTENANCE DEPARTMENT



BOZEMAN, MONTANA

"PreCise® provides the ability to look at our eld crew's data stream and what they're accomplishments are on a daily basis, as well as how to improve our daily routines to better reflect the goals of our departments."

- Zac Collins, Asset Program Manager:

Part of the GIS group within the strategic services division for the city.

SITUATION

The city of Bozeman, Montana has a population of well over 50,000 and is still anticipating more of the fast growth they've been experiencing in the past few years. The city is the home of the Bozeman Yellowstone International Airport as well as Montana State University. Additionally, the city experiences a healthy level of tourism from those visiting nearby Yellowstone National Park and popular ski resorts. As a result, Bozeman's city management teams are no strangers to constant flows of people and traffic within the city.

CHALLENGE

As is true for all asset management teams, Bozeman's ability to keep track of a lot of different information is paramount in being able to get the full picture of what is and isn't working efficiently. Additionally, for the city of Bozeman, transparency with residents has been a top priority. With a continuously growing population, city managers required a way to stay up to date on city data. Bozeman's most prominent requirements for an asset management tool were:

- Centralized information to paint the larger picture
- High quality customer service that made the tool easy to use
- Providing transparency for Bozeman locals

SOLUTION

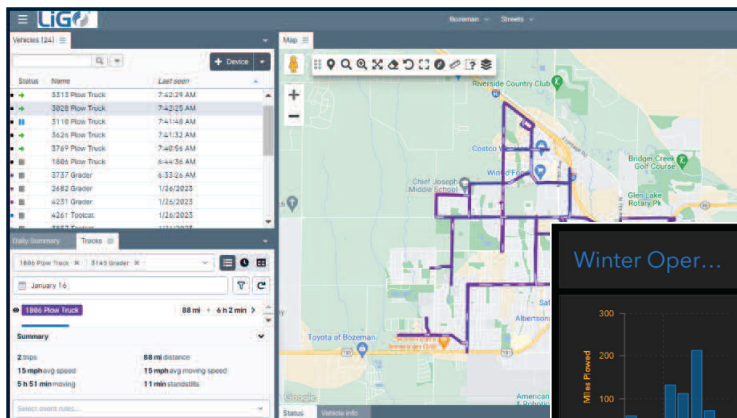
PreCise® MRM has been instrumental in their efforts to keep up with the city's growth and maintain maximum productivity in the different divisions of the city. PreCise has been implemented on a wide range of vehicles from Vactors and Plows to ATVs and Tool Cats. The wealth of information provided by our AVL (Automatic Vehicle Location) solution includes general tracking/location of assets as well as their speed, which Bozeman uses to make drivers accountable and safe.

This also allows managers to make informed decisions to prevent duplicating work and dispatch assets efficiently. PreCise also meets Bozeman's need for shareable, accessible data. Internally, Bozeman city managers are able to share data across the departments with ease. Superintendents have their viewer easily accessible with screens in their office that always display live vehicle tracks, and tracking data quick but informed decision making for dispatch.

BENEFITS

Bozeman's use of PreCise continues to grow. Currently, the City of Bozeman has 65 vehicles within Public Works, Water and Parks that use PreCise for asset management and planning. PreCise has provided tangible data that city managers are able to include within their reports for purchasing decisions. Moving forward, PreCise data will also allow for managers to stay on top of vehicle maintenance of their current assets such as timing oil changes.

Following a major priority for the city, the city website's boasts an incredible level of transparency for those living in Bozeman. Residents are able to answer their own questions without having to contact city workers to find out if their street has been plowed or sanded in the winter, or if their roads have been swept in the spring using PreCise tracks and data on their interactive public facing website.



PreCise provides the city an easy way to track assets, create reports, and make informed decisions.

PreCise data can be used to show winter operations on public facing websites

