



YAKIMA COUNTY

ROAD MAINTENANCE DEPARTMENT

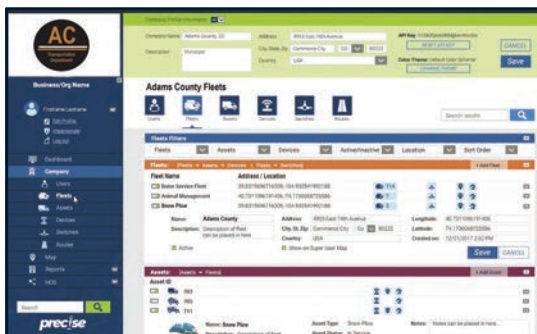
Yakima, Washington

SITUATION

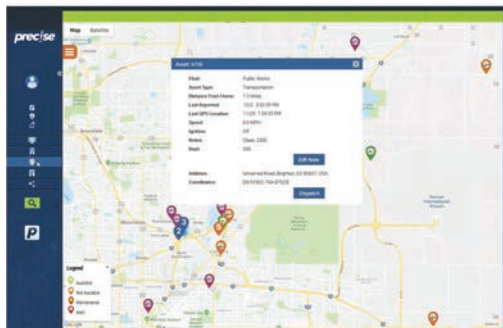
Jason Alvord is a Road Maintenance Supervisor for Yakima County in South Central Washington state. His department is responsible for maintaining the infrastructure of the roadways, from pavement striping and snow removal to road maintenance and bridge repair. The department consists of 40 vehicles that are monitored so that more efficient scheduling and routing can be continually devised.

There were three main issues keeping Jason's department from realizing peak efficiency and cost savings:

- It took the drivers 30 minutes per day or more to manually log their routes of the day; this was particularly costly since the time involved was usually allocated to overtime
- When the county would receive paint and rock chip claims, there was no way to objectively verify them.
- Jason suspected that some drivers were finishing jobs hours before reporting back to the parking lot, resulting in lost vehicle productivity.



For billing and maintenance purposes, detailed hourly usage reports are available in an easy-to-read format.



Rental managers can get detailed information about equipment activity overlaid on road and satelight mapping images.

CHALLENGE

The county was losing productivity due to the lack of a reliable automated monitoring system. The department had to find a solution that stayed within budget constraints, both in terms of short-term installation and potential long-term upgrades.

SOLUTION

Jason's department purchased PreCise® MRM units for 37 of its vehicles.

BENEFITS

The purchase resulted in the following benefits:

- Increased vehicle productivity: Since idle time can be tracked by PreCise MRM, workers are motivated to immediately report back when a job is finished. In fact, Jason reports a 75% decrease in vehicle idle time since installing PreCise MRM. In addition to providing the county with significant cost savings, this allows for the reallocation of equipment to ongoing jobs that require additional resources.
- Reduced labor costs: PreCise MRM automatically downloads vehicle usage information, so drivers no longer spend 30 minutes of overtime manually logging their routes and activities of each day.
- Improved claim verification: With usage reports that show details such as what road a vehicle was on and at what time its equipment was in use, the validity of paint and rock chip claims could be easily verified.
- Better employee morale: Workers have responded positively to the automated tracking system since they no longer have to complete a substantial amount of paperwork after a long and tiring day. Intrigued by the advanced technology of the system, some workers have even requested to see and familiarize themselves with the automated usage reports.